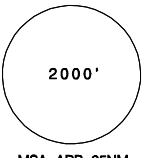
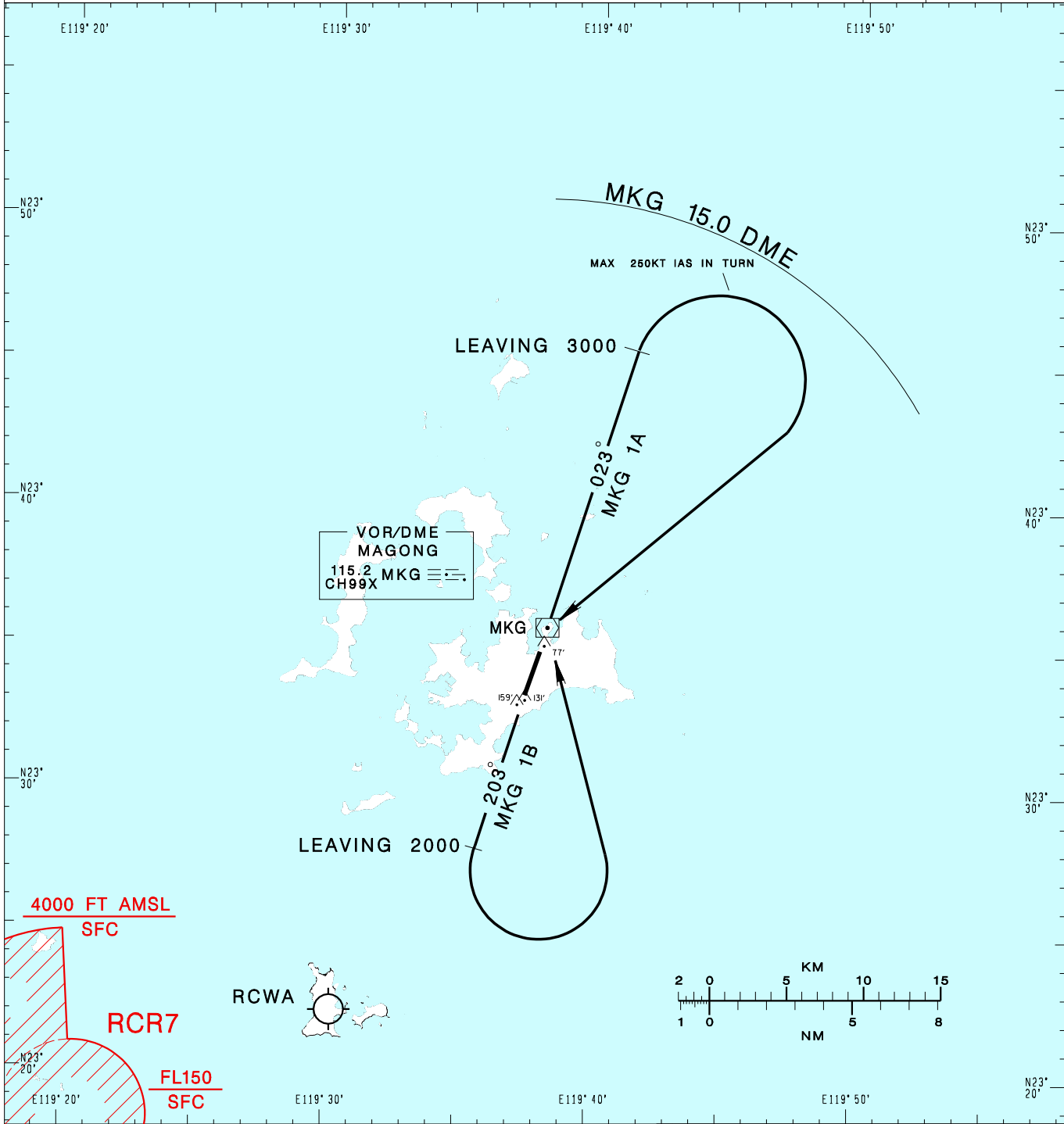


澎湖機場
PENGHU AD

RCQC SID
MKG 1A(RWY02)
MKG 1B(RWY20)

KAOHSIUNG APP 128.1 234.8	MAGONG TWR 118.3 236.6	ATIS 127.05	VAR 4° -2022 
Apt Elev: 103'		Trans Level: FL130	
BEARINGS ARE MAGNETIC; DISTANCES ARE NAUTICAL MILES; ELEVATIONS, HEIGHTS IN FEET			



MAGONG ONE ALFA DEPARTURE
Climb on MKG R-023 until leaving 3000ft, then turn right direct to MKG, complete turn within 15.0DME from MKG, cross MKG at or above 5000ft.

MAGONG ONE BRAVO DEPARTURE
Climb on MKG R-203 until leaving 2000ft, then turn left direct to MKG, cross MKG at or above 5000ft.

NOTE
Caution close-in obstacles (trees, poles & water tower):
159ft MSL, 794m & 131ft MSL, 292m south of THR02;
77ft MSL, 436m north of THR20.

CHANGES: RECHART.